

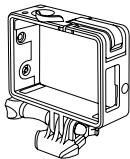
## The Frame

---

THE SMALLEST, LIGHTEST WAY  
TO MOUNT YOUR GOPRO.

**GoPro**<sup>®</sup>  
Be a *HERO*. ■■■■

## / What's Included



### **THE FRAME**

Features a minimalist design for compact mounting and optimal audio capture during low-speed activities. Provides easy access to microSD, Micro HDMI and USB ports. An integrated latch allows the camera to be removed without moving the mount.



### **QUICK RELEASE BUCKLE + THUMB SCREW**

Enables quick, convenient mounting.



### **PROTECTIVE LENS**

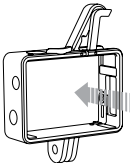
Protects the camera lens against scratches, dust and debris.

## / Setting up JUST THE CAMERA



### Step 1

Unhook the latch on the top right side of The Frame.



### Step 2

Holding the latch open, slide the camera into The Frame.

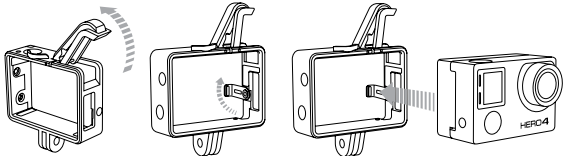


### Step 3

When the camera is flush with The Frame, close the latch to secure.



## CAMERA + LCD TOUCH BACPAC OR BATTERY BACPAC



### Step 1

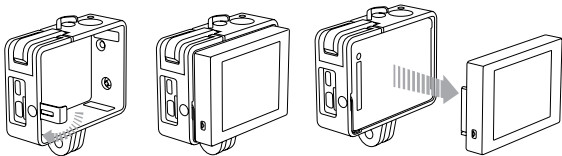
Unhook the latch on the top right side of The Frame.

### Step 2

Unhook the metal support arm and extend it 90°. The arm must be used for the BacPac to be properly secured.

### Step 3

Slide camera into The Frame until the BacPac rests against the support arm, then close the latch.

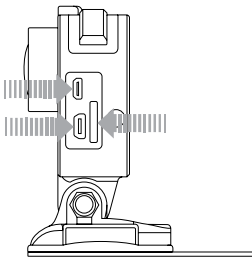


---

**PRO TIP:** Want to quickly check your shot before recording? Leave the metal support arm unextended inside The Frame, then attach and detach the **LCD Touch BacPac™** without removing the camera. Please note, the LCD Touch BacPac is not properly secured for shooting without the support arm extended.

## ACCESSING THE PORTS

The Frame provides easy, full-time access to the microSD, Micro HDMI and USB ports—perfect for live-feed video, charging and data offload.



## / DRY ENVIRONMENTS ONLY

The Frame does not provide waterproof protection for your camera, and is not intended for use in wet, dirty or extreme conditions.

## / COMPATIBILITY

Compatible with all HERO4, HERO3+ and HERO3 cameras.

Compatible with the LCD Touch BacPac™ and Battery BacPac™.

## / CUSTOMER SUPPORT

GoPro is dedicated to providing the best possible service. To reach GoPro Customer Support, visit [\*\*gopro.com/support\*\*](http://gopro.com/support).

## / JOIN THE GOPRO MOVEMENT



[facebook.com/GoPro](http://facebook.com/GoPro)



[youtube.com/GoPro](http://youtube.com/GoPro)



[twitter.com/GoPro](http://twitter.com/GoPro)



[instagram.com/GoPro](http://instagram.com/GoPro)

Learn more about GoPro  
products at **gopro.com**



Please Recycle

130-09412-000 REVA